

4 January 2010

In This Issue

- New SDA Blog and FanPage!
- Tighter Water-Efficiency Requirements
 - Project of the Month

January Web Links

<http://www.builditgreen.org/greenpoint-rated>
More about the GreenPoint Rated system for residential construction in California

<http://www.usgbc.org/LEED>
For more information about the LEED program

<http://www.water.ca.gov>
Find out what else the State is doing to respond to a third year of drought and water shortage.

Contact Us

<http://www.struthersdias.com>
<http://www.facebook.com/struthersdias>

tdias@struthersdias.com
<http://www.linkedin.com/in/tdias>

gstruthers@struthersdias.com
<http://www.linkedin.com/in/garystruthersaia>



struthers dias architects
2470 mariner square loop
alameda, ca 94501
510.386.0583 or 510.205.7535

SDA Rings in the New Year ONLINE!

SDArchi Blog:

Check out the [SDArchi Blog](#) for straight-from-the-source insights about residential architecture. Our latest entry offers advice for anyone hoping to make some sustainable new year's resolutions around the house. What advice do YOU have?

Facebook:

Become a FAN of SDA and join us on [Facebook](#). This venue is a great place for you to stay connected to what's new in the industry of green residential design. Our fanpage will link you to the more personal side of Struthers Dias Architects, with discussions about what we value as designers and citizens, as well as the occasional fun link, like [this one](#).

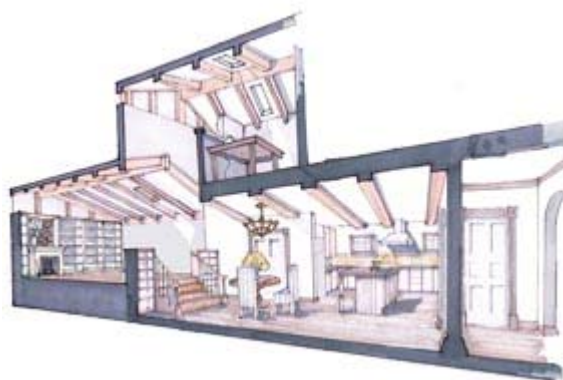
Newsflash:

Updated CA Water-Efficient-Landscape Ordinance

We ARE in a drought, so be on the lookout for more stringent regulations around landscaping water usage for newly permitted landscapes – whether new construction or renovation. Assembly Bill 1881 required an update to California's model ordinance for water efficient landscaping, (including a required maximum water budget) and now our local agencies are responding to this call to action. [Bay Friendly Landscape](#) is already adapting some of the new regulations, as is [BAWSCA](#) (Bay Area Water Supply and Conservation Agency) in the South Bay and Peninsula. The BAWSCA guidelines will apply even to landscapes as small as 1000 SF to reach more homeowners and have a greater impact than ever before.

Project of the Month:

Breathing Room in the Oakland Hills



A busy family in Oakland appreciates the formality of their lovely home, but feels hemmed in by the jumble of past additions that comprise the private spaces. Circulation is convoluted and there is no clear path from the main entry to the most-used rooms in the house. The proposed new addition will clean up that maze and provide a clean line of sight from the front door straight through to the family room – which the

homeowners describe as their favorite space. A sky-lit double-height extension will link the family room and updated kitchen to an overlook for mom's new office.

SDA has completed the [conceptual design phase](#) generating several options for this client – ranging from an interior remodel as the simplest intervention, to this possible 2-story addition. A thorough conceptual design phase makes it easy for the homeowner to understand the range of options available, and feel confident about making informed decisions.

Newsletter Preferences

To unsubscribe from this monthly newsletter, please reply to sender and include the word "UNSUBSCRIBE" in the subject line. Thank you.